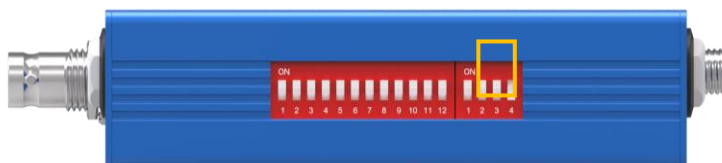


# PC Control Software Instructions

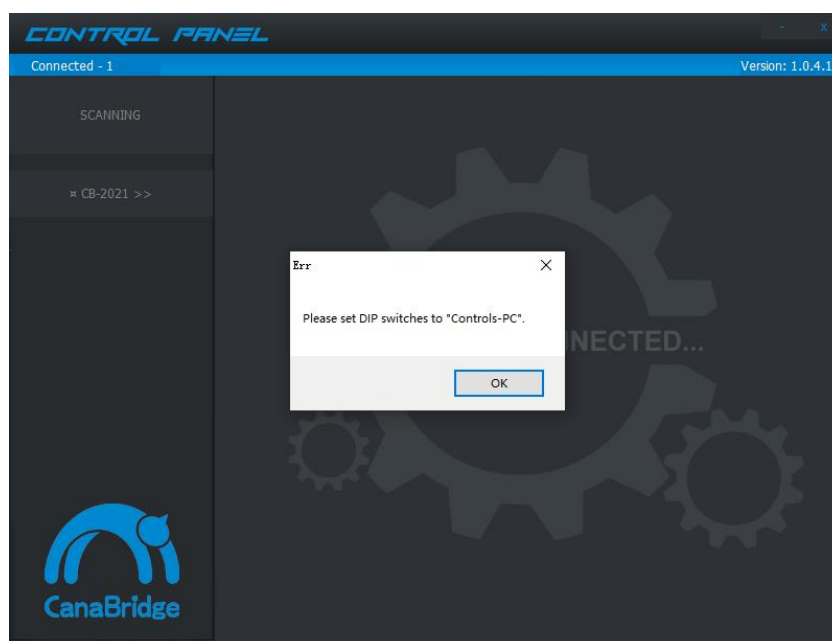
## PREPARATION

1. Connect CB-2021 with PC via USB cable.
2. Open the control software on your computer.
3. Before use please make sure the "SW3" & "SW4" of DIP 2 switches were set to "1" & "0".

3G-SDI to HDMI & AV Scaling Converter																
DIP 1 (1=ON, 0=OFF)							DIP 2 (1=ON, 0=OFF)									
HDMI Output	SW1	SW2	SW3	SW4	Audio De-Embedding	SW5	SW6	SW7	AV Out	SW1						
Follow Input	1	1	1	1	SDI CH1-2	1	1	1	NTSC	1						
1080p60	1	1	1	0	SDI CH3-4	1	1	0	PAL	0						
1080p50	1	1	0	1	SDI CH5-6	1	0	1	Status Display	SW2						
1080p30	1	1	0	0	SDI CH7-8	1	0	0			ON	1				
1080p25	1	0	1	1	SDI CH9-10	0	1	1	OFF	0						
1080p24	1	0	1	0	SDI CH11-12	0	1	0	Controls	SW3	SW4					
1080i60	1	0	0	1	SDI CH13-14	0	0	1				DIP	1	1		
1080i50	1	0	0	0	SDI CH15-16	0	0	0	PC	1	0					
720p60	0	1	1	1	HDMI Audio Embedding	SW8	SW9									
720p50	0	1	1	0				SDI CH1-8	1	1						
720p30	0	1	0	1	SDI CH9-16	1	0									
720p25	0	1	0	0	AES/EBU	0	1									
720p24	0	0	1	1	Analog	0	0									
576i50	0	0	1	0	HDMI Color Space	SW10	SW11									
480i60	0	0	0	1				RGB 444	1	1						
576i50 Cut	0	0	0	0	YCbCr 422	1	0									
					YCbCr 444	0	1									
					DVI RGB 444	0	0									

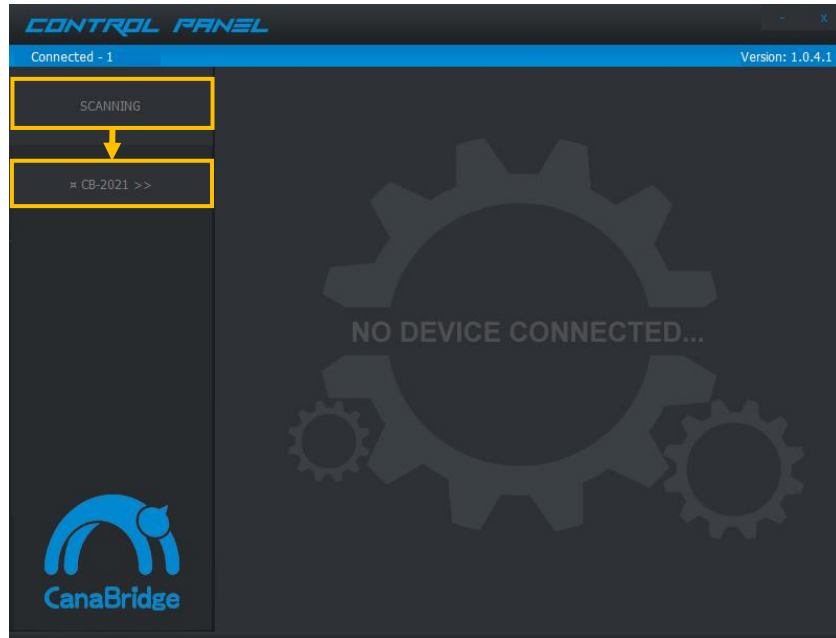


4. Otherwise the control software will display the following prompt.

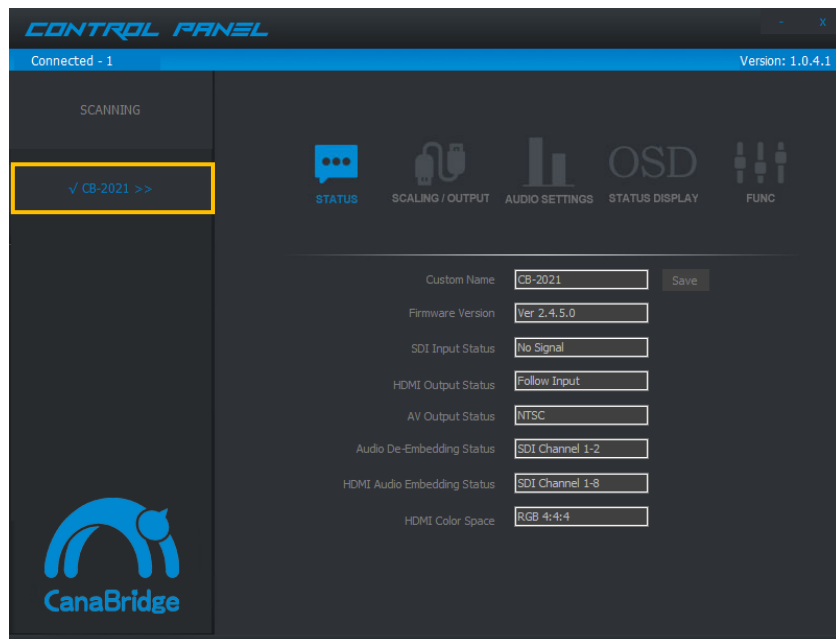


## SETTINGS

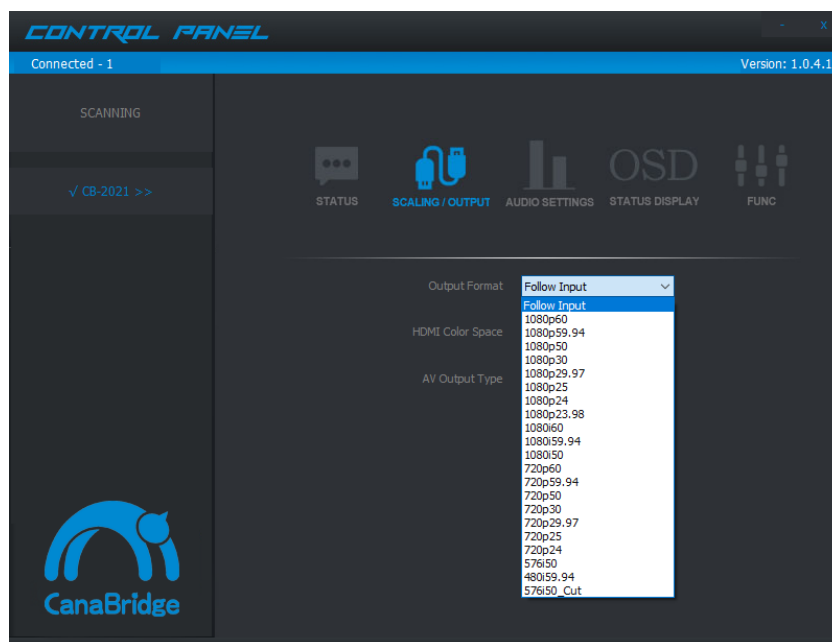
1. Click the "SCANNING", The searched device is displayed in the middle left. Click the device name to enter the STATUS screen.



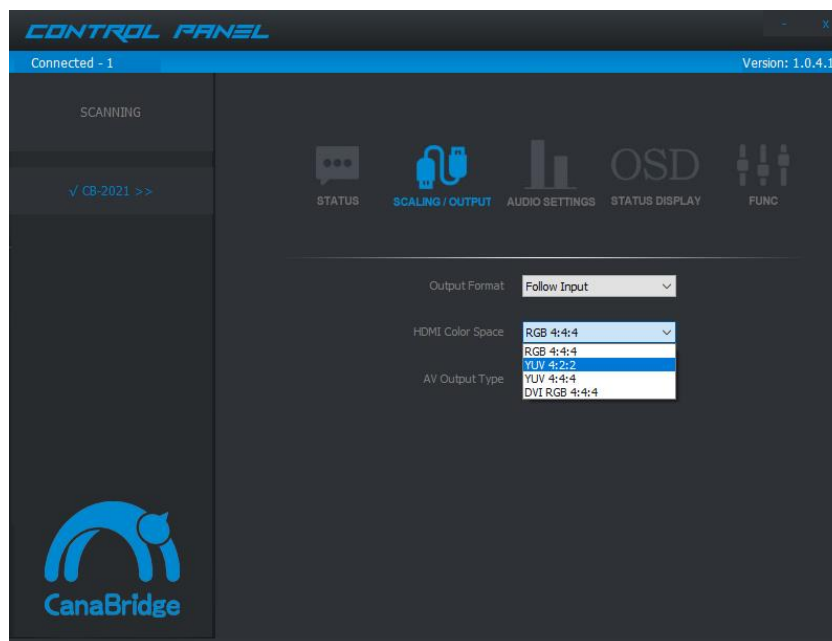
2. STATUS. It was used to show the current device output format, as well as audio status. And the name of the device can be customized.



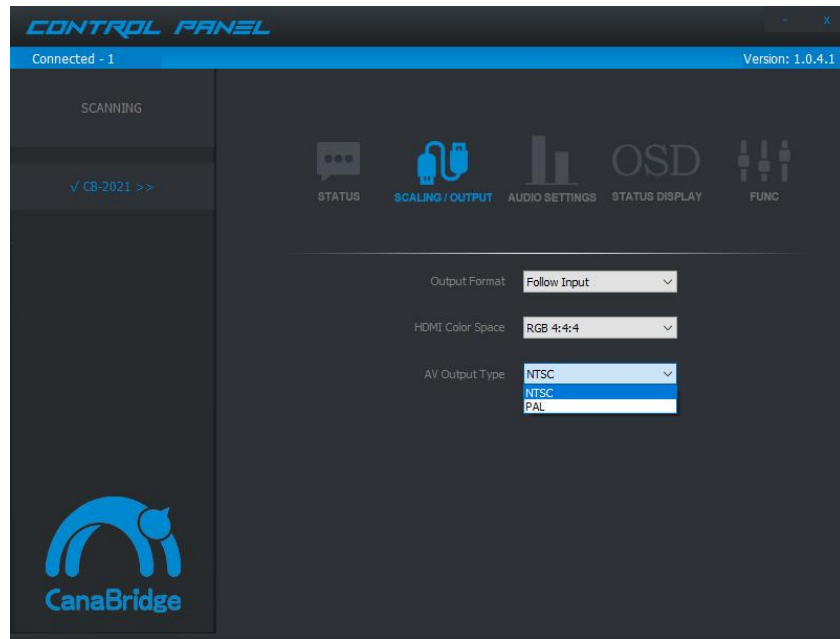
3. SCALING/ OUTPUT, which is used to set the output format of video.  
Output Format, to realize pass through or up/down scaling and frame rate conversion at HDMI output.  
The items that can be set are shown in the figure below.



HDMI Color Space, to select a color space for HDMI output from RGB 444, YCbCr 422, YCbCr 444 or DVI RGB 444.

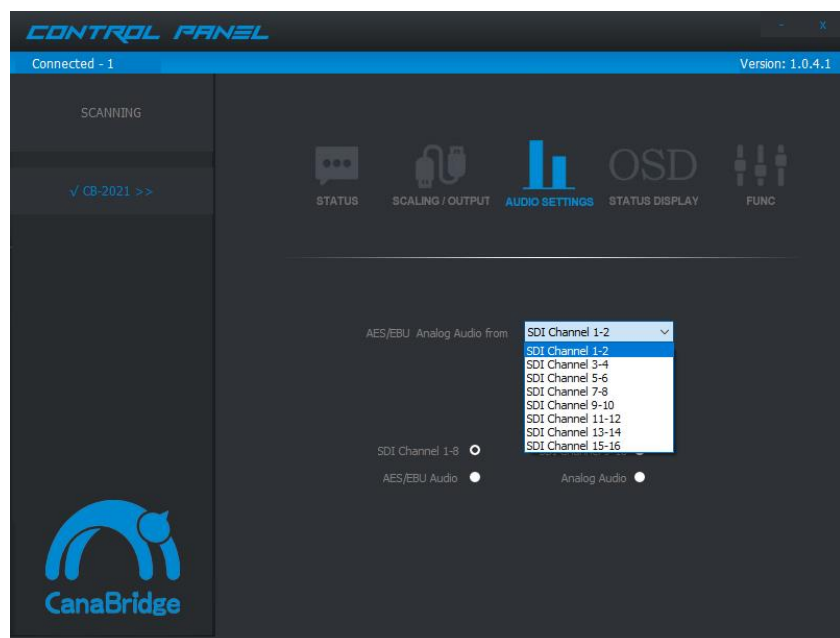


AV Output Type, to select a type of AV from NTSC or PAL.

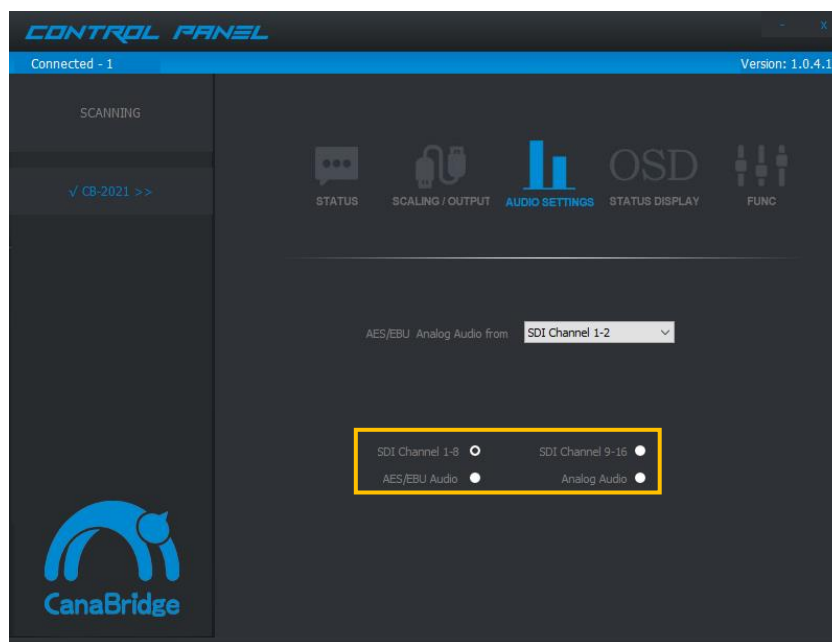


4. AUDIO SETTINGS, which is used to set the output format of video.

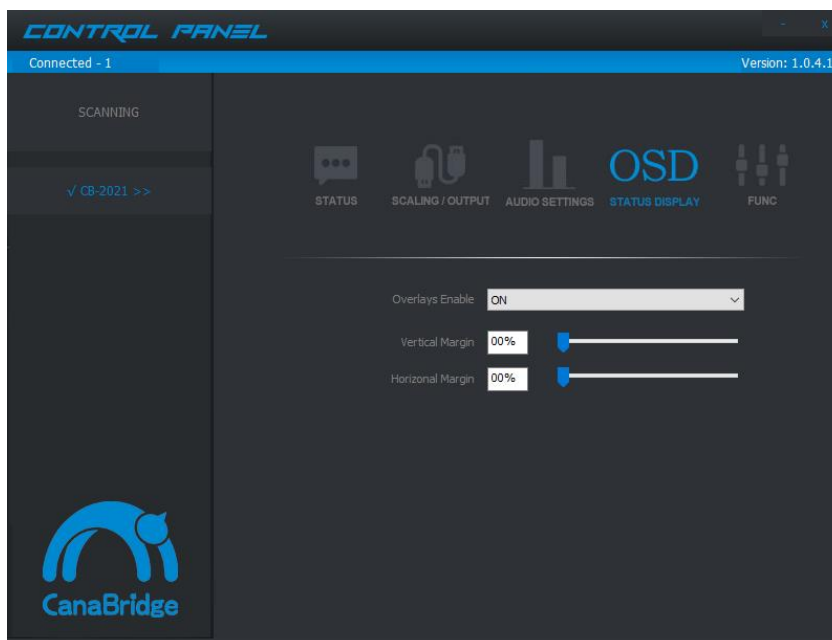
AES/EBU, Analog Audio can be De-embedded 2 channels audio from SDI audio channel 1-16.



Select the HDMI & AV Audio from SDI, AES/EBU or Analog audio input.



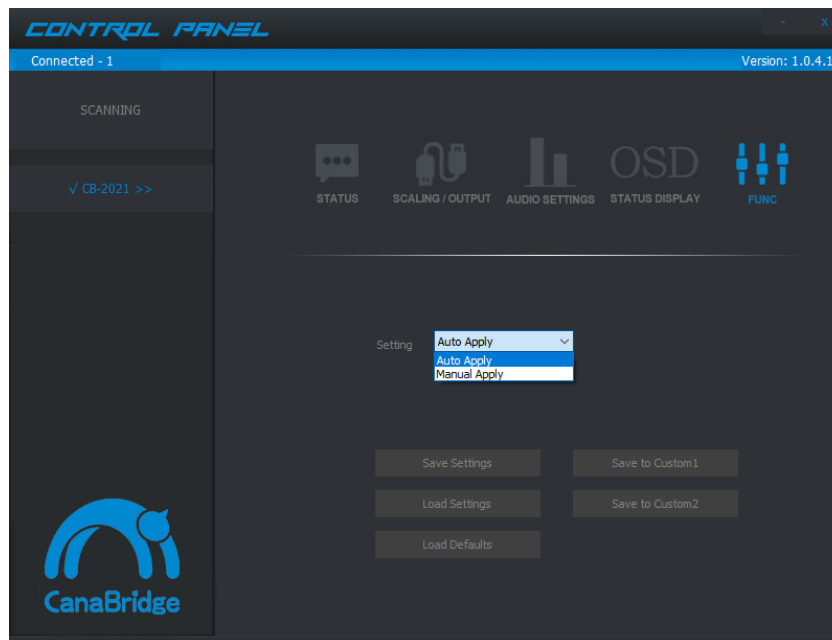
5. STATUS DISPLAY, which is used to set the position of OSD. Overlay display also can be disabled.



6. FUNC, which is used for settings of quick operating.

In Auto Apply status, each setting in the control software takes effect immediately after being clicked.

In Manual Apply, The apply button appears. When all settings are completed, you must press the apply button to set them to take effect.



Other parts of the buttons are used to save/load settings or restore factory Settings. And it can be saved the convenient operation to Dip switches Custom1 & Custom2.

